

# *Trees and Tree Disease*

*By Patrick J. Keiper II*

*Lasalle Prep.*

*2018 GTEST GIS Summer Camp*

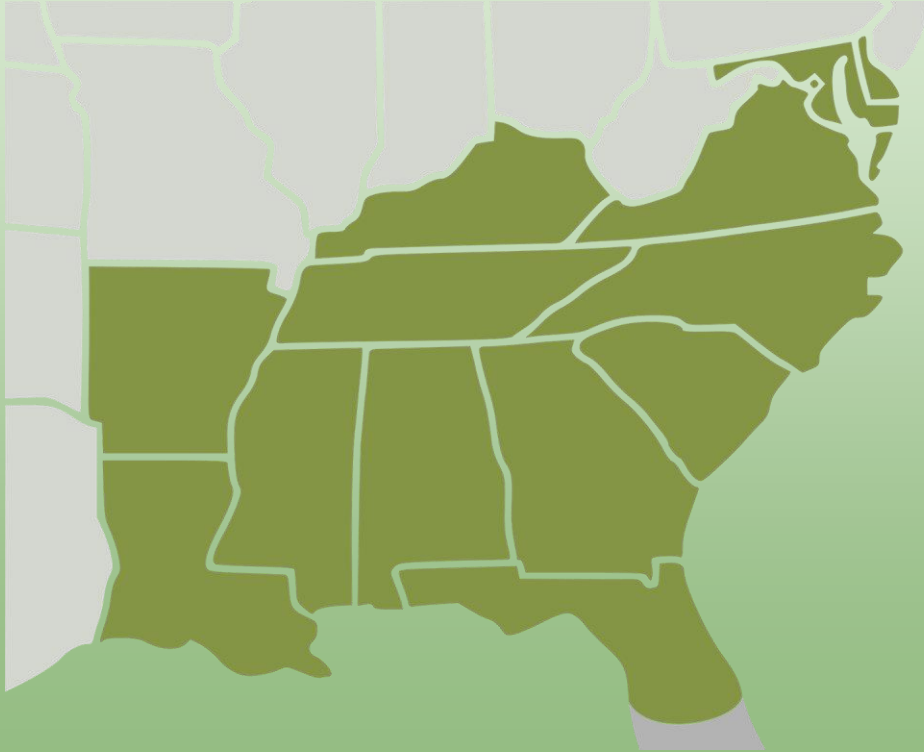


# The Purpose - What's Going On?

*Trees are dying. Insects, Viral diseases, and Pathogenic Bacteria are causing widespread tree mortality. We need to learn how to stop this rapid killing of our trees, and so we need to see what kinds of trees are being killed by these diseases.*



# *Where is the Problem?*

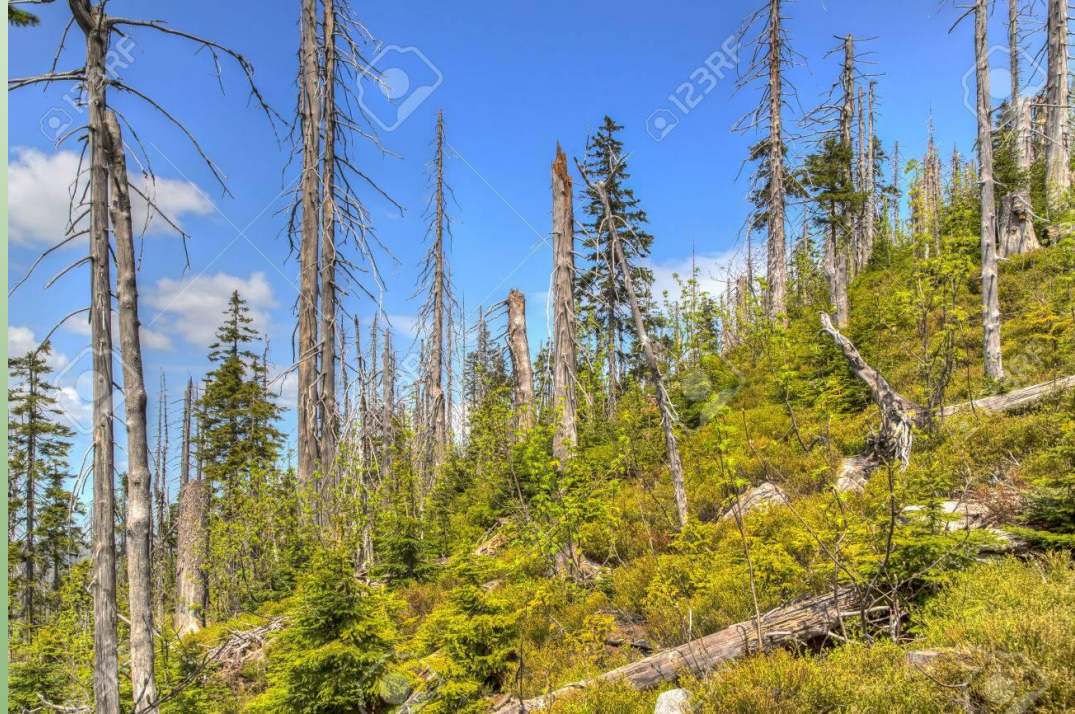


*The southeastern United States seems to be hit the hardest with its high density of Oak and Pine forests.*



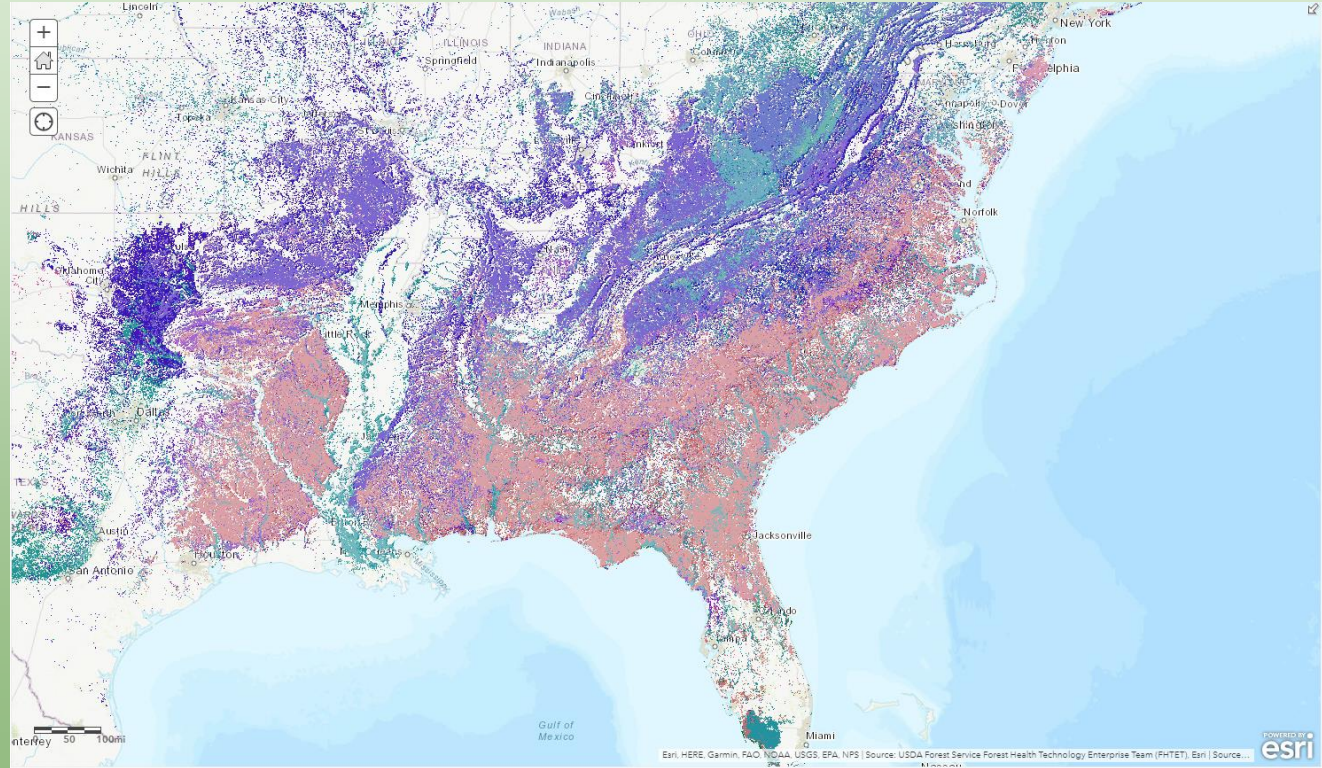
# *The Analysis*

*The analysis shows the Hot Spots for extremely high concentrations of projected forest death due to disease.*



# The Results

*On the map to the right, different colors represent different tree species. A large portion of those trees are tinted white - those forests are the Hot Spots. Forests tinted white have a projected death rate of up to 70%.*





# *My Career Path*

## *I like:*

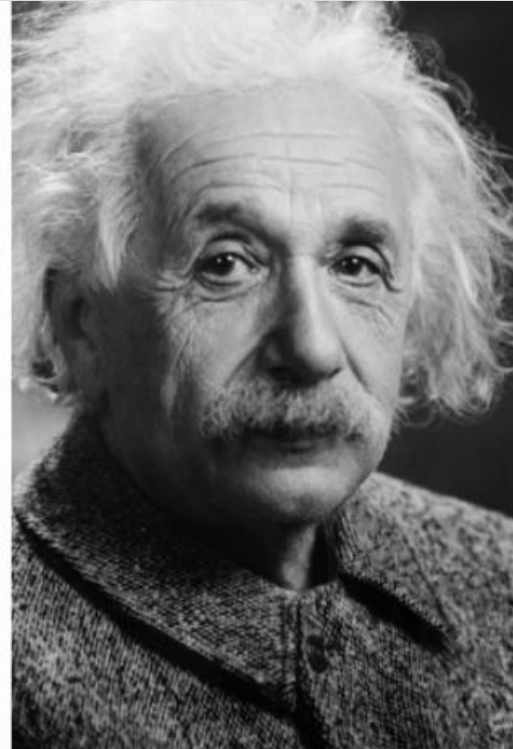
- *Video Games*
- *Math*
- *Science*
- *Reading*

## *I am Good at:*

- *Video Games*
- *Math*
- *Science*

## *My Career is: Physicist*

- *They conduct a lot of research and perform complicated experiments to verify theoretical ideas.*
  - *I like all the science and math involved in physics work.*
  - *This summer I will do this camp and any other job available.*
  - *This school year I will take any available science and math classes.*
  - *Helpful people include teachers and counselors.*
- GIS could be useful in mapping and analyzing particle patterns and/or pathways.*



# References

<http://www.mortonarb.org/trees-plants/tree-and-plant-advice/help-diseases/pine-diseases>

<https://www.fs.fed.us/foresthealth/applied-sciences/mapping-reporting/gis-spatial-analysis/national-risk-maps.shtml>

<https://www.fs.fed.us/foresthealth/protecting-forest/native-insects-diseases/>

<https://www.google.com/>